

ASTERISM THE SAIL

The four brightest stars, Kras, Algorab, Gienah and Minkar, mark the corners of a “square” which resembles the outline of a ship’s sail.

The Sail lies in the small constellation Corvus.

Corvus is associated with several greek myths involving the crow, the sacred bird of Apollo.

The centre of the constellation contains the planetary Nebula NGC 4361.

Corvus is also home to the Antennae Galaxies, a peculiar, heart-shaped deep sky object that consists of two galaxies, NGC 4038 and NGC 4039, currently undergoing a collision. As a result of the collision, both galaxies have long tails of stars, dust and gas, resembling an Insect’s Antennae.

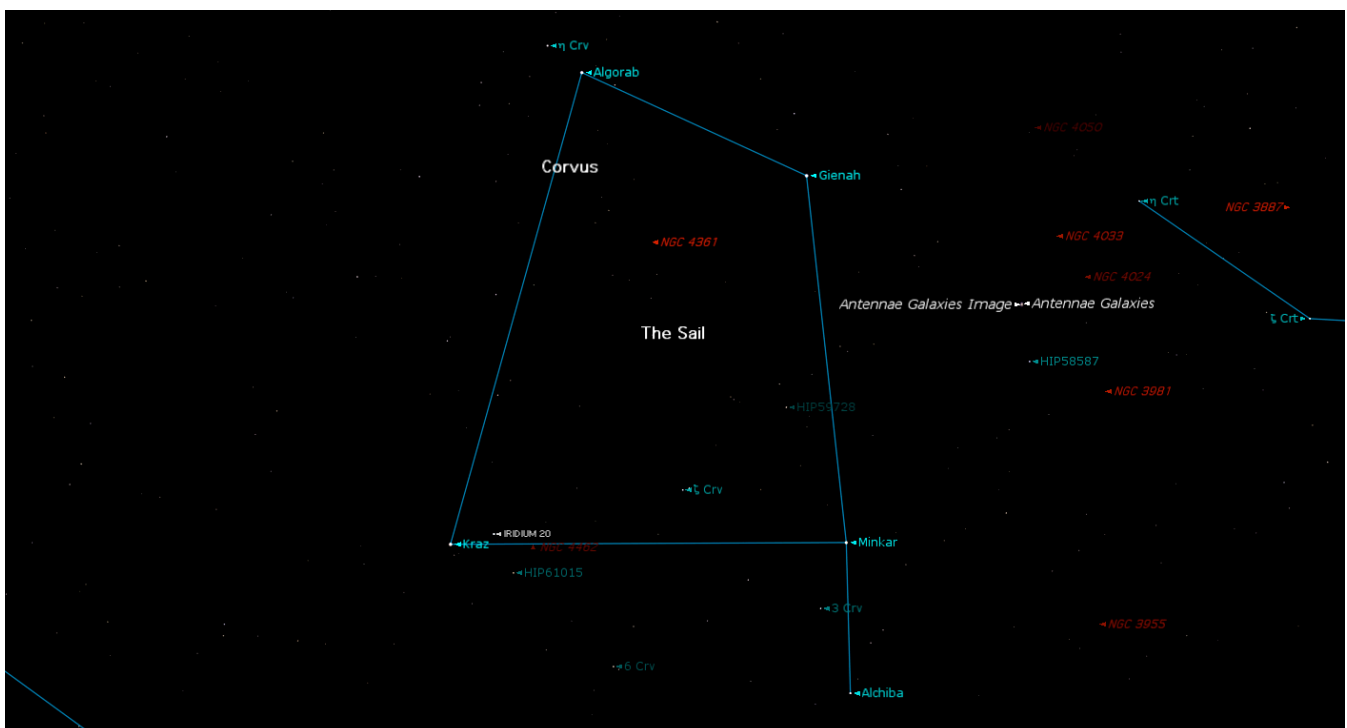
Asterism - An asterism is a distinctive pattern of stars or a distinctive group of stars in the sky.

Constellation - A grouping of stars that make an imaginary picture in the sky.
There are 88 constellations.

Planetary Nebula - A luminous shell of gas, often of complex structure, cast of and caused to fluoresce by an evolved star of less than about 4 Msun.

Galaxy - A large system of stars, along with interstellar material and dark matter, that is held together by mutual gravitational attraction.

THE STARS AND OBJECTS NEARBY



THE ANTENNAE GALAXIES NGC 4038 (LEFT) & NGC 4039 (RIGHT)



THE MAIN-THEMES IN ASTERISM THE SAIL

THE SAIL

T h e S a i l

ALGORAB

Musical notation for ALGORAB. The score is written on a grand staff (treble and bass clefs) in 6/8 time. The melody is primarily in the bass clef, with some notes in the treble clef. The lyrics are: A l g o r a b.

KRAZ

Musical notation for KRAZ. The score is written on a single staff in 2/4 time. The melody is in the treble clef. The lyrics are: K r a z z.

MINKAR

Musical notation for MINKAR. The score is written on a single staff in 10/8 time. The melody is in the treble clef. The lyrics are: M i n k a r.

GIENAH

Musical notation for GIENAH. The score is written on a single staff in 6/4 time. The melody is in the treble clef. The lyrics are: G i e n a h G i e n a h.

THE MOTIVES IN ASTERISM THE SAIL

CORVI

A BAYER / FLAMSTEED INDICATION

Musical notation for CORVI. The score is written on a single staff in 5/8 time. The melody is in the treble clef. The lyrics are: C o r v i.

TYC

TYCHO MISSION
THE HIPPARCOS AND TYCHO CATALOGUES (VOL. 1-17)



T y c

ESO

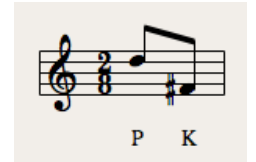
EUROPEAN SOUTHERN OBSERVATORY - THE ESO/UPPSALA SURVEY OF THE
ESO (B) ATLAS OF SOUTH SKY



E S O

PK

CATALOGUE OF GALACTIC PLANETARY NEBULAE



P K

H

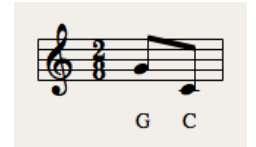
NUEVAS NEBULOSAS PLANETARIAS Y OBJETOS CON EMISION EN LA REGION DEL
CENTRO GALACTICO



h

GC

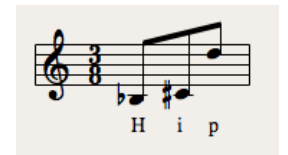
GENERAL CATALOGUE OF 33342 STARS FOR THE EPOCH 1950



G C

HIP

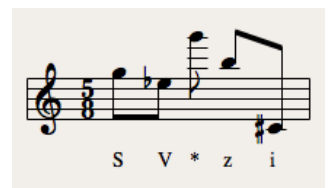
THE HIPPARCOS AND TYCHO CATALOGUES (VOL. 1-17)



H i p

SV*ZI

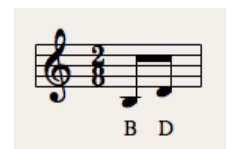
ZINNER, VARIABLE STAR



S V * z i

BD

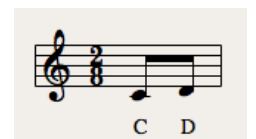
BONNER DURCHMUSTERUNG



B D

CD

CORDOBA DURCHMUSTERUNG DECLINATION



C D

CPD

CAPE PHOTOGRAPHIC DURCHMUSTERUNG FOR THE EQUINOX 1875



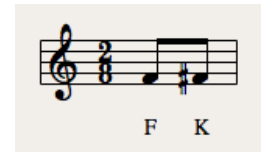
CSV

CATALOG OF SUSPECTED VARIABLE STARS



FK

FEIGELSON + KRISS - DISCOVERY OF THREE X-RAY LUMINOUS PRE-MAIN SEQUENCE STARS



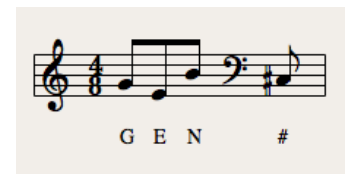
GCRV

GENERAL CATALOG OF STELLAR RADIAL VELOCITIES



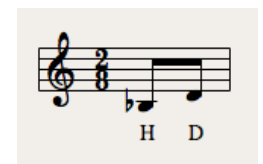
GEN#

GENEVA IDENTIFICATION SYSTEM



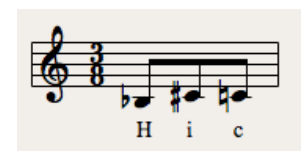
HD

HENRY DRAPER CATALOGUE



HIC

HIPPARCOS INPUT CATALOGUE



HR

HARVARD OBSERVATORY - THE BRIGHT STAR CATALOGUE



IRAS

INFRARED ASTRONOMICAL SATELLITE (IRAS), CATALOGS AND ATLASES



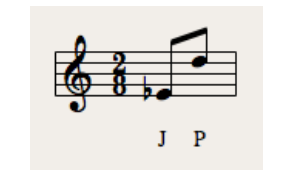
IRC

INFRARED CATALOG



JP

JODRELL BANK, PULSAR - PULSARS: OBSERVATIONAL PARAMETERS AND A DISCUSSION ON DISPERSION MEASURES



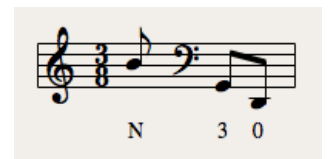
[L91b]

LU, 1991 - TAXONOMY OF BARIUM STARS



N30

NORMAL SYSTEM, EPOCH 1930 - CATALOG OF 5268 STANDARD STARS FOR THE EQUINOX AND EPOCH 1950.0 BASED ON THE NORMAL STAR SYSTEM N30



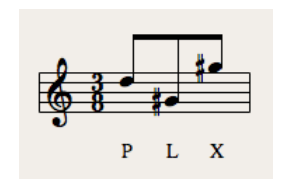
NSV

NEW CATALOG OF SUSPECTED VARIABLE STARS



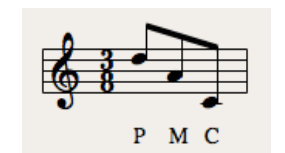
PLX

PARALLAX - GENERAL CATALOGUE OF TRIGONOMETRIC STELLAR PARALLAXES, COMPILED AT THE YALE UNIVERSITY OBSERVATORY



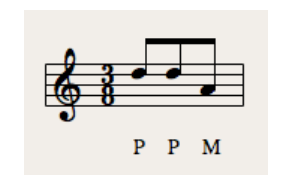
PMC

PHOTOELECTRIC MERIDIAN CIRCLE



PPM

POSITION AND PROPER MOTIONS NORTH STAR CATALOGUE



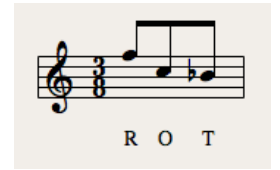
RAFGL

REVISED AIR FORCE GEOPHYS. LAB.



ROT

ROTATIONAL VELOCITY - CATALOGUE OF ROTATIONAL VELOCITIES OF STARS



SACS

SECOND ASTROLABE CATALOGUE OF SANTIAGO



SAO

SMITHSONIAN ASTROPHYSICAL OBSERVATORY



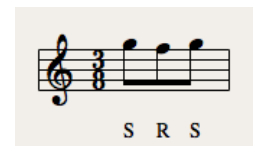
SKY#

SKYMAP



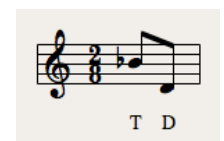
SRS

SOUTHERN REFERENCE - A CATALOGUE OF POSITIONS OF 24900 STARS



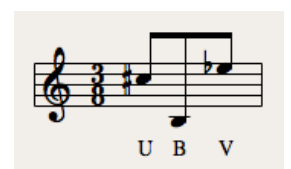
TD

TIDAL DWARE - STAR-FORMING OBJECTS IN THE TIDAL TAILS OF COMPACT GROUPS



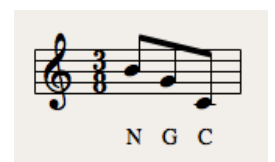
UBV

UBV SYSTEM - PHOTOELECTRIC CATALOGUE , MAGNITUDES AND COLORS OF STARS IN THE UBV AND UCVB SYSTEMS



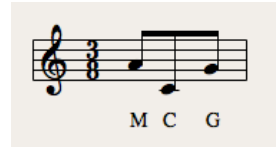
NGC

A NEW GENERAL CATALOGUE OF NEBULAE AND CLUSTERS OF STARS, BEING THE CATALOGUE OF THE LATE SIR JOHN F.W. HERSCHEL



MCG

MORPHOLOGICAL CATALOG OF GALAXIES



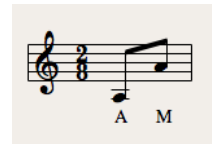
PGC

PRINCIPAL GALAXIES CATALOG



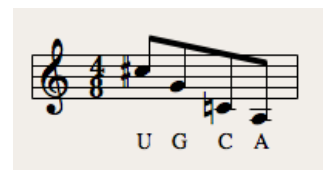
AM

ARP+MADORE - A CATALOGUE OF SOUTHERN PECULIAR GALAXIES AND ASSOCIATIONS



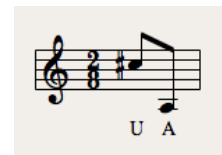
UGCA

UPPSALA OBSERVATORY, GENERAL CATALOG, ADDENDUM



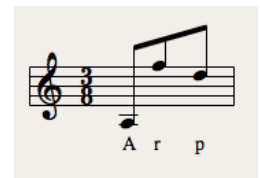
UA

UPPSALA OBSERVATORY, ADDENDUM



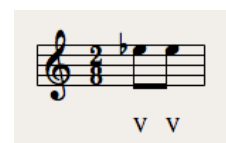
ARP

ATLAS OF PECULIAR GALAXIES



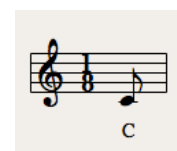
VV

VORONTSOV / VEL'YAMINOV - MORPHOLOGICAL CATALOGUE OF GALAXIES



C

CLUSTER



THEMES USED IN THE SAIL

THE SAIL

THEMES USED IN ALGORAB

ALGORAB
HIP 60965
DELTA CORVI
7 CORVI
TYC 6103-2395-1

NGC 4361

SAC 32
ESO 573-PN19
PK 294+43.1
HI-65
H 1231
GC 2917

THEMES USED IN KRAZ

HIP 61359
BETA CORVI
9 CORVI
TYC 6683-1116-1
SV*ZI 946
* BET CRV
* 9 CRV
BD-22 3401
CD-22 3401
CPD-22 5388
CSV 101293
FK5 471
GC 17133
GCRV 7566
GEN#+1.00109379
HD 109379
HIC 61359
HR 4786
IRAS 12317-2307
IRC-20240
JP11 2237
[L91B] 210
N30 2906
NSV 5729
PLX 2896
PMC 90-93 335
PPM 260512
RAFGL 1558
ROT 1843
SACS 272
SAO 180915
SKY# 23509
SRS 30471
TD1 16365
UBV 11287
UBV M 18363

NGC 4462

ESO 506-13
MCG -4-30-2
PGC 41150
AM 1226-225
HIII-764
GC 3014
IRAS 12266-2253

THEMES USED IN MINKAR

MINKAR
VARIABLE STAR
GALACTIC COORDINATES
12 10 07.4807 - 22 37 11.159
[6.23 4.01 104]A
PROPER MOTION
-71.52 10.55 [69 .45 103]A
GALACTIC
290.59 + 39.26
B MAGN, V MAGN 4.375, 3.017
SPECTRAL TYPE
K2III
REDSHIFT
v +4.9 [.9] A
PARALLAXES
10.75 [.71] A

NGC 3955

ESO 504-26
MCG -4-28-5
PGC 37320
AM 1151-225
HII-623
GC 2609

THEMES USED IN GIENAH

GIENAH
HIP 59803
GAMMA CORVI
4 CORVI
TYC 6098-1754-1
CANCER

NGC 3981
PGC 37496
ESO 572-20
MCG -3-31-1
UGCA 255
UA 255
ARP 289
HIII-274
GC 2628
VV 8
IRAS 11535-1937

NGC 4038

C60
ANTENNAE GALAXIES
RINGTAIL GALAXIES
THE ANTENNAE
ESO 572-47
MCG -3-31-14
PGC 37967
UGCA 264
UA 264
ARP 244
HIV-28.1
H 1052
GC 2670
VV 245

NGC 4039

C61
ESO 572-48
MCG -3-31-15
PGC 37969
UGCA 264
ARP 244

HIV-28.2
H 1053
GC 2671
VV 245

NGC 4024
ESO 572-31
MCG -3-31-4
PGC 37690
HII-295
GC 2658

NGC 4033
ESO 572-42
MCG -3-31-11
PGC 37863
HII-508
GC 2665

NGC 3887
IRAS 11445-1634
MCG -3-30-12
PGC 36754
UGCA 246
UA 246
HI-120
H 979
H 3360
GC 2554

NGC 4050
IRAS 12003-1605
MCG -3-31-16
PGC 38049
HII-509
GC 2679